

An aerial photograph of a school campus. In the center is a large football field with a red running track. The field has "HACKENSACK" written on the left end zone and "COMPTON" on the right end zone, with a large orange "H" in the middle. To the left of the field are several school buildings with flat roofs and brick accents. A parking lot is situated between the buildings and the field. The background shows a residential neighborhood with houses and trees. A yellow line is drawn across the image, starting from the top left and extending towards the bottom right.

Hackensack Board of Education Referendum

spiegle



Overall Plan

Address current and projected enrollment/capacity needs

Elementary's: PK-2 (current PK-4)

Middle School: Gr 3-6 (current 5-8)

Create a new grade 7-9 school

High School: Gr 10-12 (current 9-12)

Alterations, Renovations and upgrades at existing schools



Fairmount ES

\$2.2 M

Re-align School from K-4 to PK-2

Toilet Room Alterations

New Pre-K Toilet Rooms

New Elevator

Main Office Reconfiguration

New Secure Vestibule

ALTERATIONS



Fairmount ES

\$2.9 M

Upgrade Student Drop Off Area
Brick and Steel Lintel Restoration
Window Replacement
Replace Auditorium Exit Stair
Safety Glazing for Interior Doors
Upgrade Existing Branch Wiring
New Fire Alarm System

RENOVATIONS

An aerial photograph of a large, multi-story red brick school building with a grey roof. The building is surrounded by green trees and a paved road with parked cars. The text is overlaid on the image.

Fairmount ES

\$5.4 M

Boiler Plant - Steam

Building Controls Upgrade

HVAC: Classroom

Auditorium

Gymnasium

Library

Cafeteria

Faculty Room

HVAC UPGRADES

An aerial photograph of Fanny Hillers Elementary School, a large red brick building with multiple wings and a courtyard. The school is surrounded by green trees and residential houses in the background. The image is used as a background for the text overlay.

Fanny Hillers ES

\$2.4 M

Re-align School from K-4 to PK-2

Toilet Room/PK Toilet Room Alterations

ADA Ramp in Cafeteria

Nurse Suite Reconfiguration

Art Room Casework and Sink

Classroom Alterations

ALTERATIONS



Fanny Hillers ES

\$1.9 M

Upgrade Student Drop Off Area

Brick and Steel Lintel Restoration

Window Replacement

Sound Attenuation Improvements

Roof Replacement

Interior door replacement

Electrical Service and Panels

Generator and Transfer Switch

RENOVATIONS

Fanny Hillers ES

\$5.1M

Boiler Plant - Steam

Building Controls Upgrade

HVAC: Classroom

Auditorium

Gymnasium

Library

Cafeteria

Faculty Room

HVAC UPGRADES

An aerial photograph of Jackson Avenue Elementary School, a large brick building with a flat roof and multiple windows. The school is surrounded by a residential neighborhood with houses and trees. A parking lot is visible to the right of the building. The text is overlaid on the left side of the image.

Jackson Avenue ES \$2.2 M

Re-align School from K-4 to PK-2

Toilet Room Alterations

New Elevator

Main Office Relocations

New Secure Vestibule

Classroom Alterations

ALTERATIONS



Jackson Avenue ES \$900 k

Upgrade Student Drop Off Area

Brick and Steel Lintel Restoration

Ramps and Sidewalk Upgrades

Sound Attenuation Improvements

Hot Water Heater Replacement

Interior Door Replacement

Emergency Lighting

Generator and Transfer Switch

RENOVATIONS



Nellie K. Parker ES \$2.6 M

Re-align School from K-4 to PK-2

Toilet Room Alterations

Pre-K Toilet Rooms

Main Office Relocation

New Secure Vestibule

Secure 3rd and 4th floor
(currently open layouts)

ALTERATIONS



Nellie K. Parker ES \$1.0 M

Upgrade Student Drop Off Area

Brick / Stucco Restoration

Door Hardware Replacement

Gym Floor Replacement

New Hot Water Pumps and Heat Exchanger

New Fire Alarm System

New Generator

Lighting Replacement Gym and Classrooms

RENOVATIONS

An aerial photograph of a school building with a flat roof. Several HVAC units and exhaust fans are visible on the roof. The building is surrounded by trees and a parking lot. The text is overlaid on the image.

Nellie K. Parker ES \$3.5 M

Roof Exhaust Fans

Classroom Vertical AHU - HVAC

Indoor AHU (Penthouse) - HVAC

Indoor AHU (Gym) - HVAC

Unit Heaters - H&V Only

Building Controls Upgrade

HVAC UPGRADES

An aerial photograph of a large school building complex with multiple wings and a flat roof. The building is surrounded by parking lots, trees, and other urban structures. The text is overlaid on the image in white and semi-transparent fonts.

Hackensack MS / Upper ES

Re-align School from 5,6,7,8 to 3,4,5,6

Toilet Room Alterations

STEAM Lab Alterations

Minor Classroom Alterations

\$3.1 M

ALTERATIONS



Hackensack MS / Upper ES

Brick / Stucco Restoration

Window Replacement

Door Hardware Replacement

Gym Floor Replacement

New Fire Alarm System

New Generator / Electrical Service

Partial Roof Replacement

New Playground

\$4.8 M

RENOVATIONS



Hackensack MS / Upper ES

Roof Exhaust & Mech. Penthouse Fans

Classroom Vertical AHU - HVAC

Indoor AHU - HVAC

Administration - HVAC

Unit Heaters - H&V Only

Building Controls Upgrade

\$8.6 M

HVAC UPGRADES



Hackensack HS

Re-align School from 9 – 12 to 10 – 12

Toilet Room Alterations

Relocate Main Entrance

Secure Vestibule

TV Studio Alterations

Metal Shop Alterations

Robotics Lab Alterations

\$1.5M

ALTERATIONS

Hackensack HS

Brick / Stucco Restoration

Window Replacement

Door Hardware Replacement

Gym Lobby Floor / Lighting Replacement

New Fire Alarm Devices

PA System Upgrades

Field House Lighting

Pool Mechanical Upgrades

\$6.0M

RENOVATIONS

An aerial photograph of Hackensack High School, showing a large, multi-story brick building with a flat roof. The building is surrounded by green lawns, trees, and parking lots. In the background, there are more buildings and a residential area.

Hackensack HS

Roof Exhaust & Mech. Penthouse Fans

Classroom Vertical AHU - HVAC

Gym / Cafeteria- HVAC

Auditorium - HVAC

Unit Heaters - H&V Only

Electrical Upgrades

Building Controls Upgrade

\$10.8M

HVAC UPGRADES

An aerial photograph of a school campus. In the foreground, a large, modern building with a grey facade and large windows is under construction. The building has a flat roof with several HVAC units. To the left, there's a parking lot with several cars. In the background, there's a green field, possibly a baseball field, and other school buildings. The sky is clear and blue.

New 7, 8, 9 School \$97.8M

195,000 square feet (1,477 projected enroll)

Classrooms, STEAM & Science Labs

Gymnasium (3 Station)

Auditorium (750 Seats)

Media Center

Common Areas

Parking Garage (200 Spaces)

Located next to HS

NEW BUILDING

New 7-9 School



New 7-9 School Site

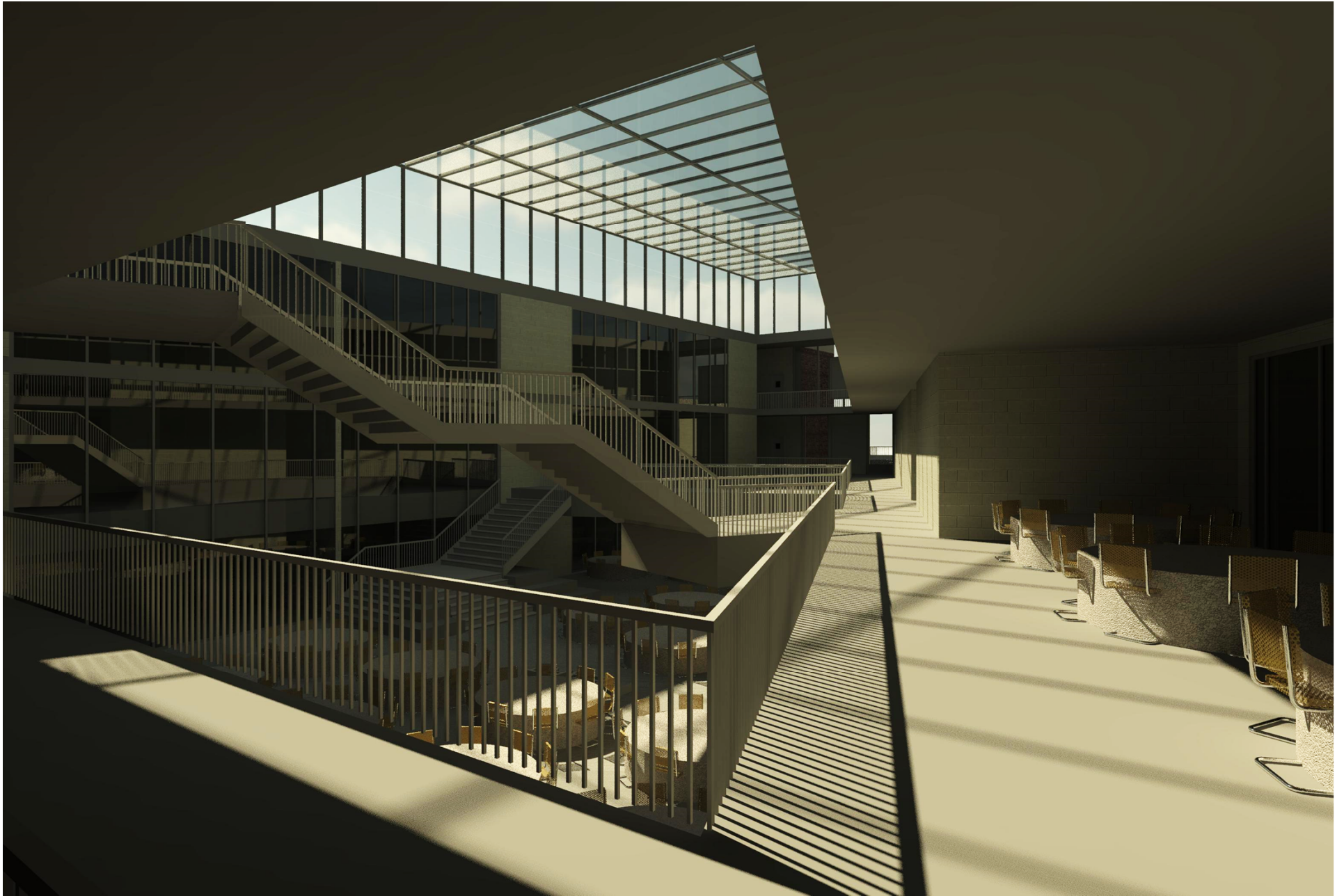
Existing HS Parking Lot
(Garage proposed)

Existing HS

Site



“Heart” Space / Center of School



“Heart” Space / Center of School

ALTERATIONS

Fairmount ES	\$	2,175,867
Fanny M. Hillers ES	\$	2,356,875
Jackson Avenue ES	\$	2,214,834
Nellie K. Parker ES	\$	2,601,990
Hackensack MS	\$	3,079,650
Hackensack HS	\$	1,533,540
High School Fields	\$	2,500,000

Total Alterations: \$16,462,756

\$16.5 Million

SUMMARY

RENOVATIONS

Fairmount ES	\$	2,911,665
Fanny M. Hillers ES	\$	1,930,079
Jackson Avenue ES	\$	895,613
Nellie K. Parker ES	\$	1,027,346
Hackensack MS	\$	4,762,220
Hackensack HS	\$	5,983,370

Total Alterations: \$17,510,293

\$17.5 Million

SUMMARY

HVAC UPGRADES

Fairmount ES \$ 5,329,931

Fanny M. Hillers ES \$ 5,089,593

Nellie K. Parker ES \$ 3,541,723

Hackensack MS \$ 8,626,540

Hackensack HS \$ 10,764,948

Total Alterations: \$33,352,735

\$33.4 Million

SUMMARY

TOTALS

New Construction \$ 97,731,750

(new 7-9 school)

Alterations \$ 16,462,756

Renovations \$ 17,510,293

HVAC Upgrades \$ 33,352,735

Total: \$ 165,057,534

\$165.1 Million

SUMMARY



Thank you.

Questions?



deliver
engage
communicate
deliver
engage
communicate
deliver
engage
communicate
deliver
engage
communicate



Referendum Total = Approx. \$165.1 Million

XXXXX

XXXXX

XXXXX

* 40% Potential Debt Service Aid Through Referendum

FINANCING